

ADLÅRCASTRA

Ground Level Preparations

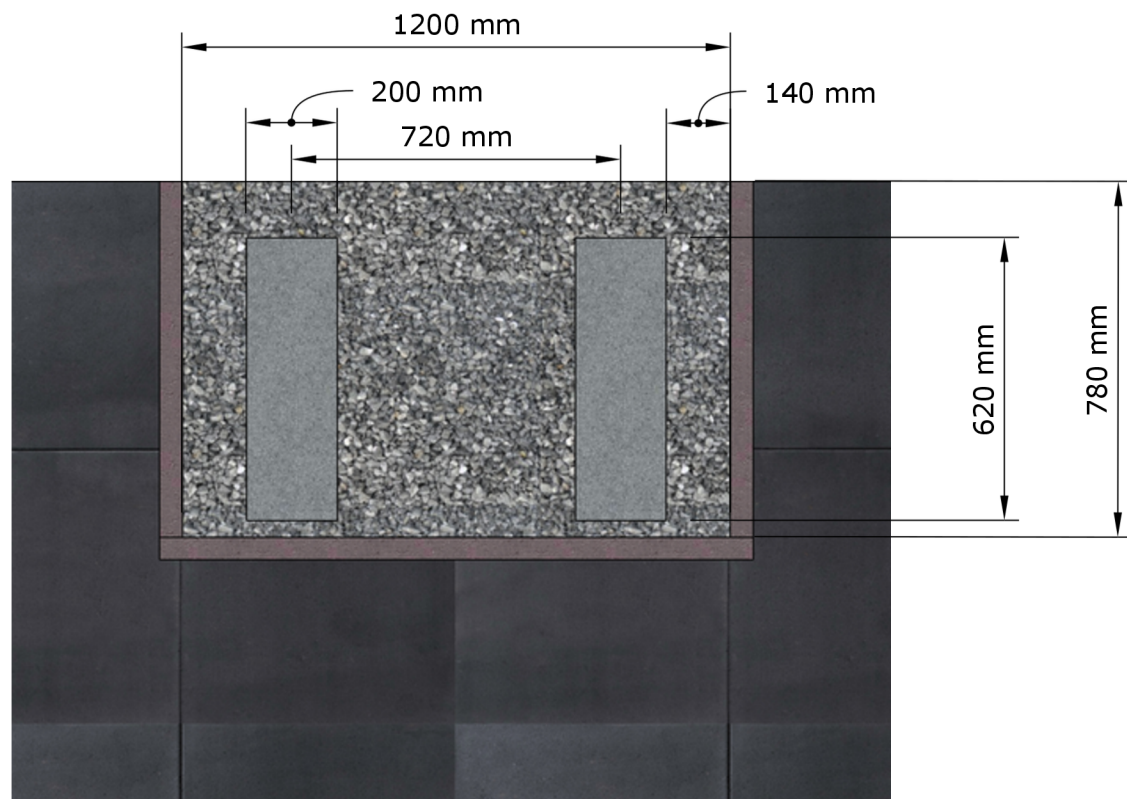


Fig. 1

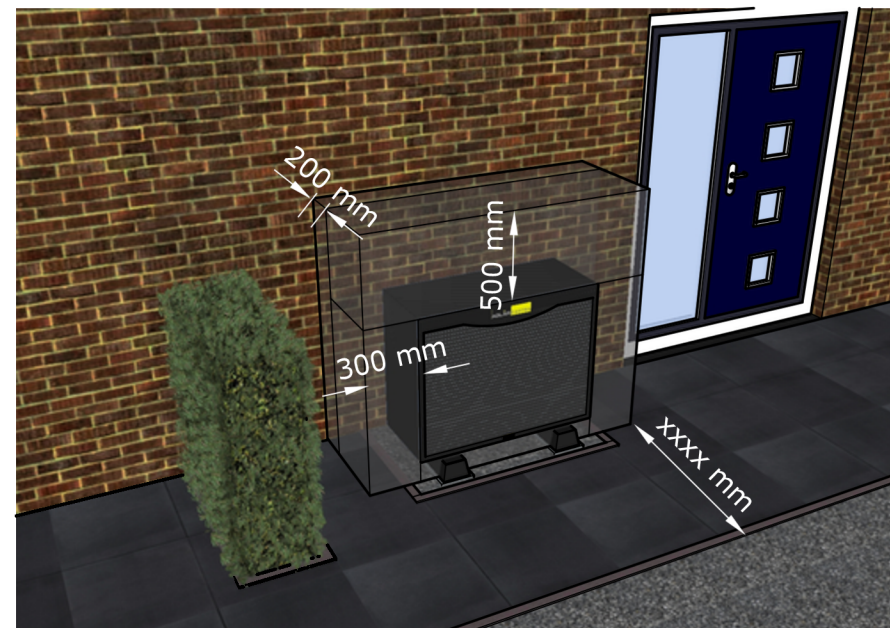


Fig. 2

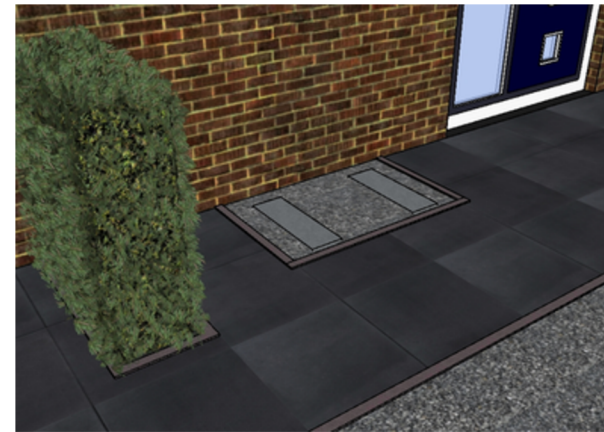


Fig. 3



Fig. 4



Fig. 5

POINTS OF ATTENTION:

Foundation:

- Install both foundation slabs, ensure vertically and horizontally level
- Material: Concrete or plastic/composite

Gravel Layer:

- Depth of gravel layer depends on the water permeability. Water must be able to flow freely into the soil layer. (Guideline: When emptying a large filled watering can, the gravel layer must not overflow.)

General:

- The dimensions defined in fig 2 are the minimum requirement to for airflow.
- Due to efficiency of airflow and optimal absorption of noise, where possible, the front of the pump shouldn't be obstructed.

DESCRIPTION:	STATUS:	AUTHOR	REVISION:		
AURORA II (6 & 10 kW) - Ground level preparation	DEF	HgbW	02		
PROJECT:	SCALE:	DRAFT/REVISION DATE:	FORMAT:	NUMBER:	
Installation Preparation	N/A	04-04-2023	A3	AC-ALG-HP-23-008-EN	



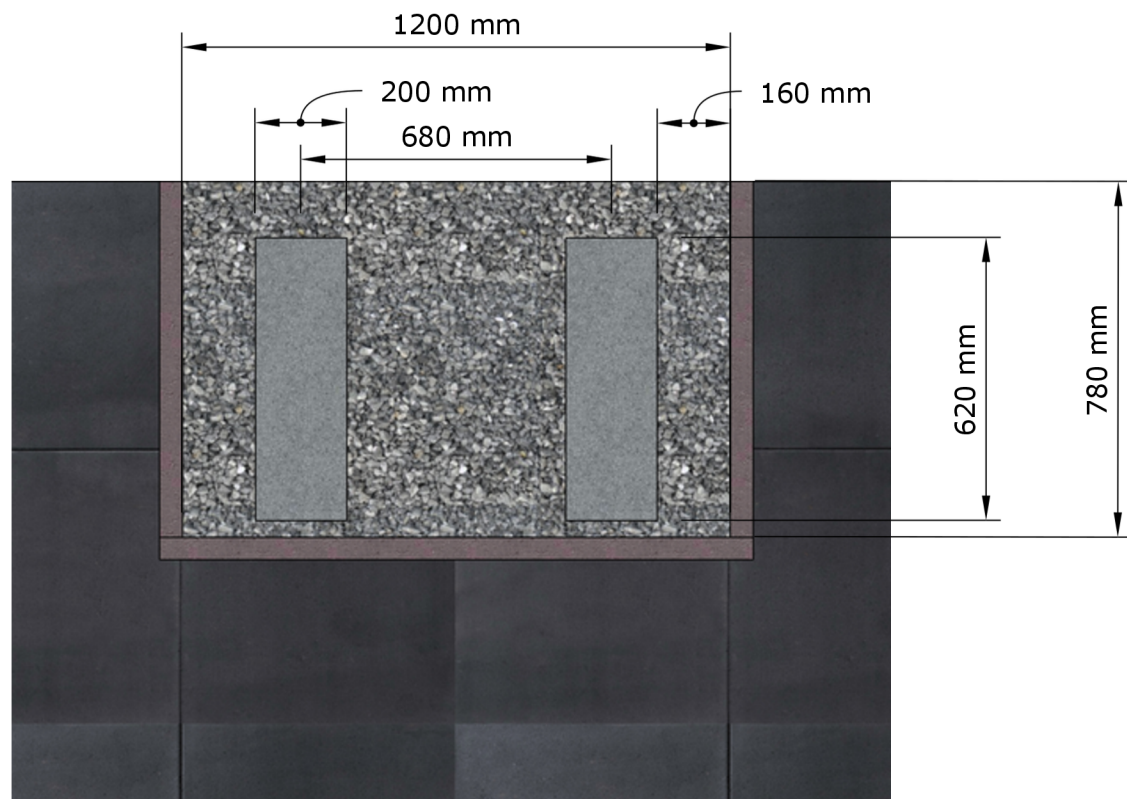


Fig. 1

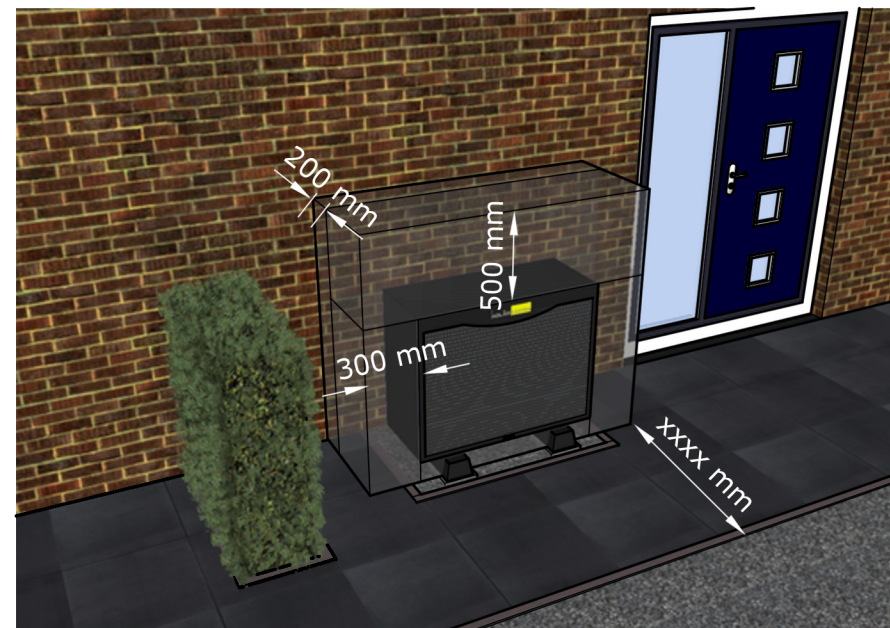


Fig. 2

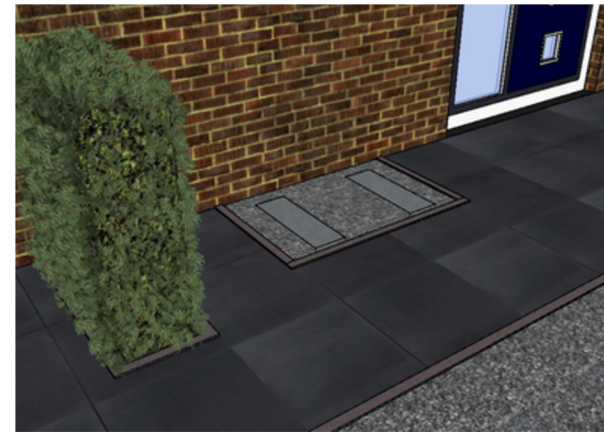


Fig. 3



Fig. 4



Fig. 5

POINTS OF ATTENTION:

Foundation:

- Install both foundation slabs, ensure vertically and horizontally level
- Material: Concrete or plastic/composite

Gravel Layer:

- Depth of gravel layer depends on the water permeability. Water must be able to flow freely into the soil layer. (Guideline: When emptying a large filled watering can, the gravel layer must not overflow.)

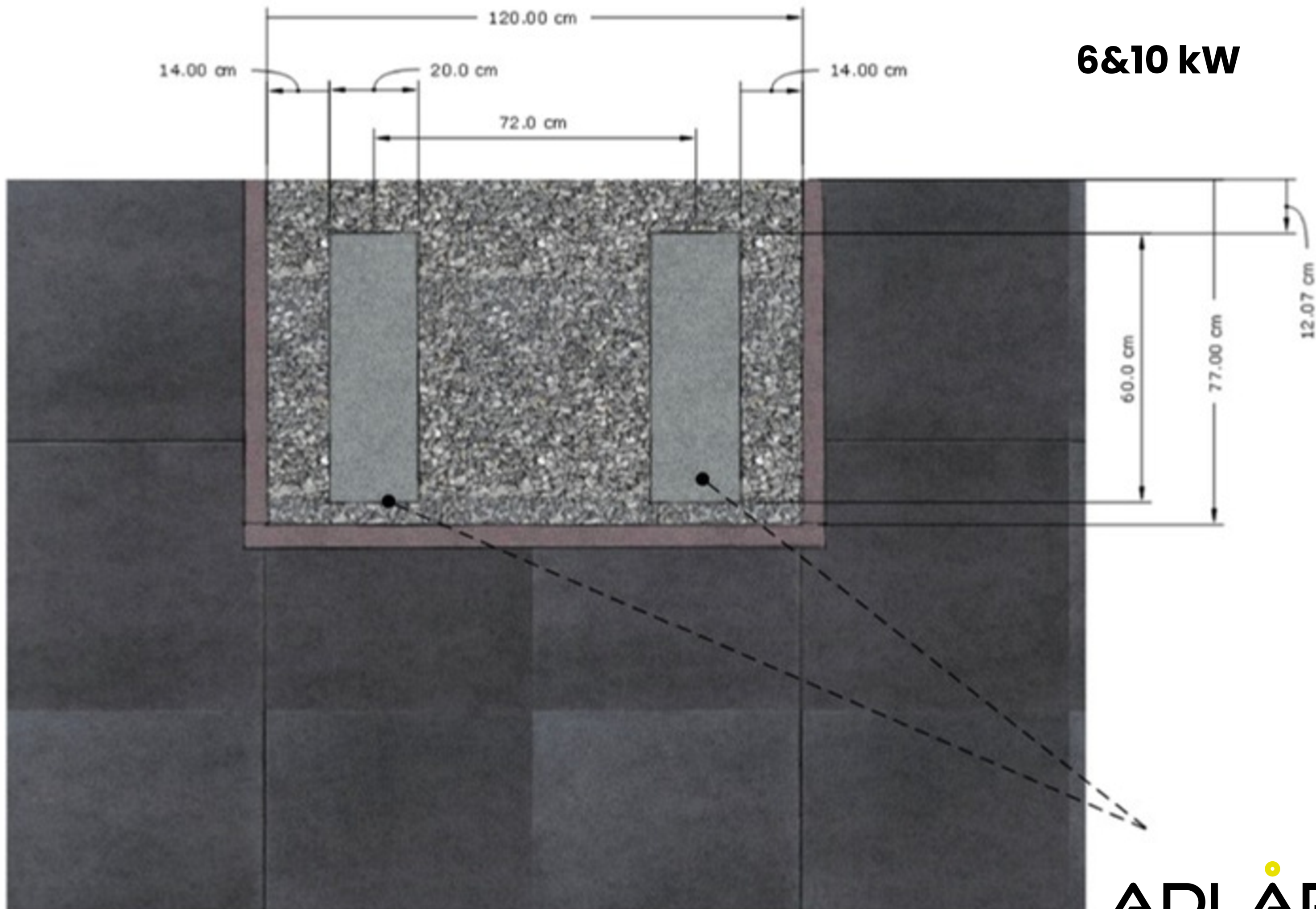
General:

- The dimensions defined in fig 2 are the minimum requirement for airflow.
- Due to efficiency of airflow and optimal absorption of noise, where possible, the front of the pump shouldn't be obstructed.

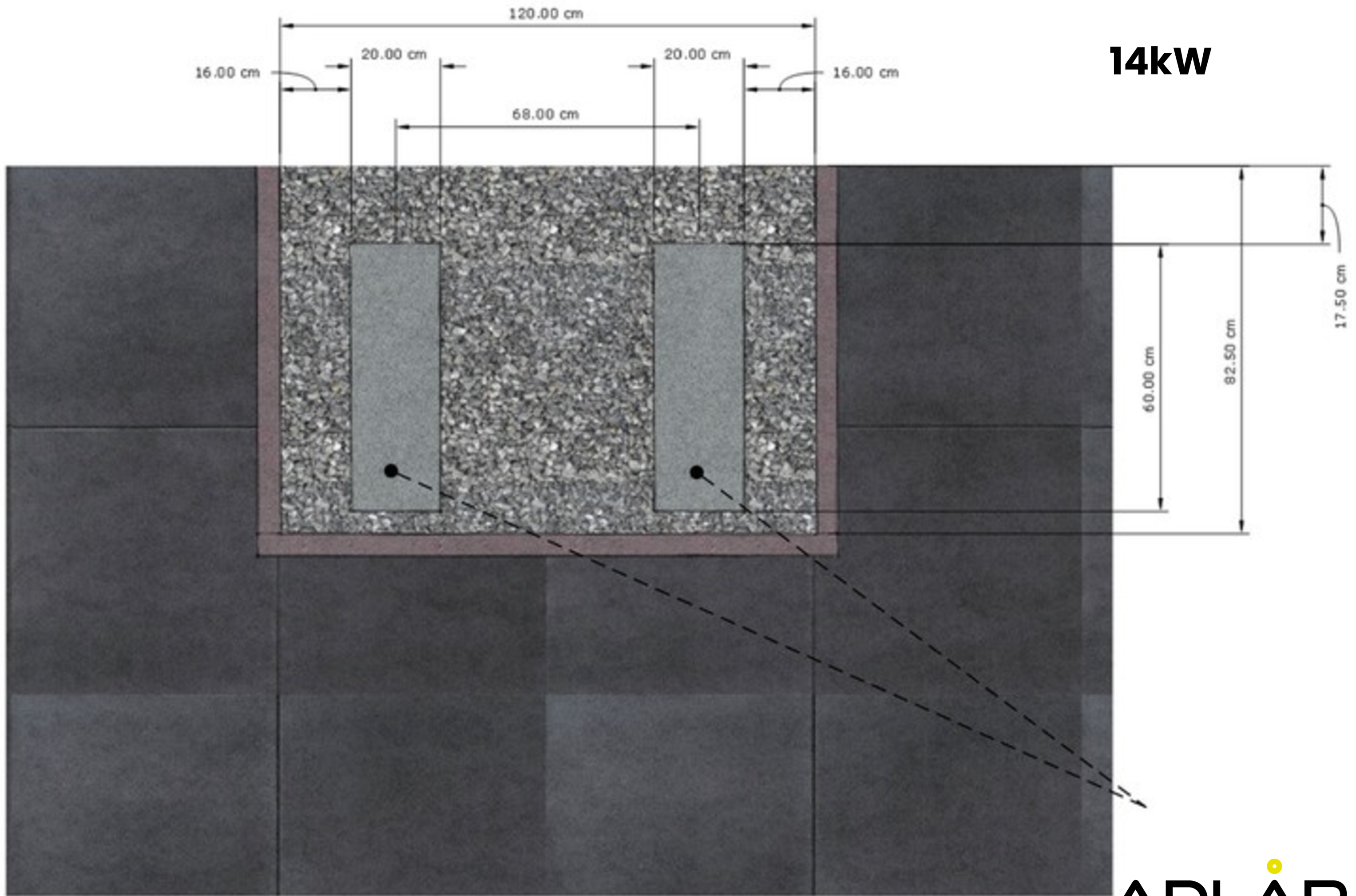
DESCRIPTION:	DRAFTSTATUS:	DRAFTSMAN:	REVISIONNUMBER:		
AURORA II (14 kW) - Ground Level Preparation	DEF	HgbW	02		
PROJECT:	SCALE:	DRAFT/REVISION DATE:	FORMAT:	DRAFTNUMBER:	
Installation Preparation	N/A	06-04-2023	A3	AC-ALG-HP-23-009-EN	



6&10 kW



Afb. 1



Afb. 1